

Quality Gauge & Valve “Steam-Line” Products You won’t get “steamed” with us

TB1540 “Steam Line” Direct Reading Steam/Water Gauges For 1500 PSI (Working Steam Pressure) WSP

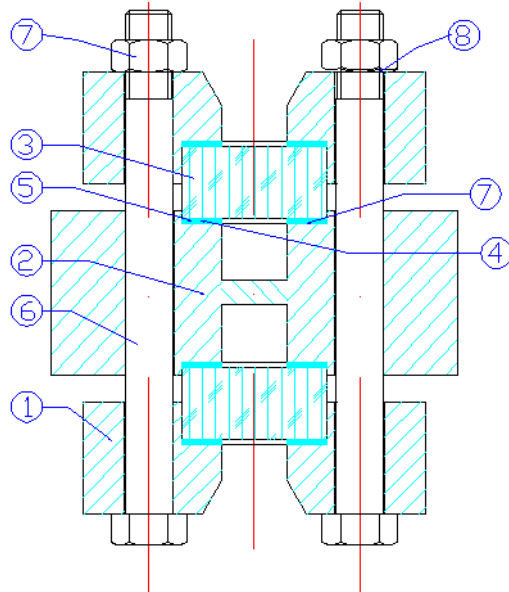
- Durable Construction for Optimal Performance
- A.S.M.E. Sec.1 Compliant
- Recessed Gasket in Chamber and Cover
- Custom Built to Meet Your Requirements
- Spring Washers for Constant Torque
- Special Coating for Steam Service
- Multiple Connections Available
- High Quality Mica Shield for Glass Protection



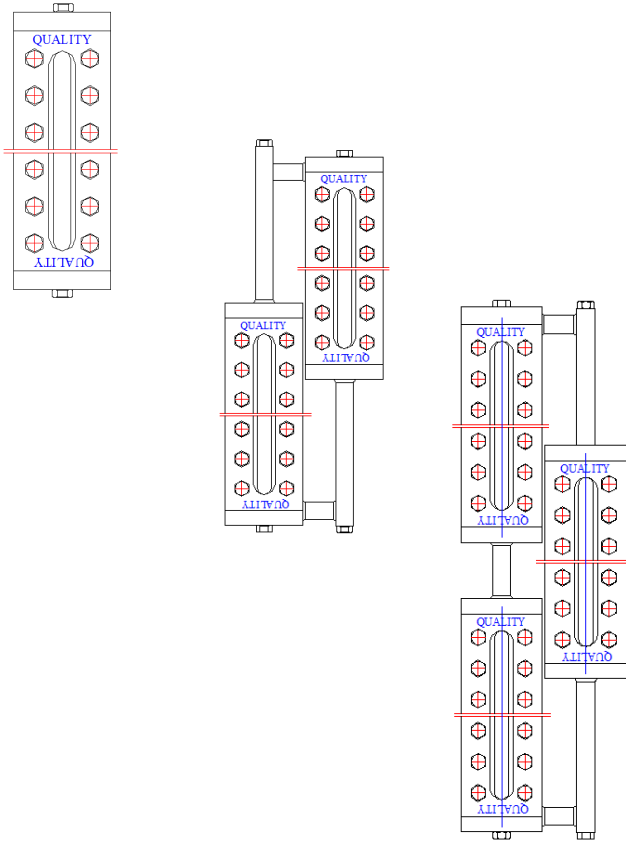
The “Steam Line” TB1540 units are designed for steam service to 1500WSP. These Gauges can be used as Direct Reading Sight Glass for boilers in compliance with A.S.M.E. PG-60. Visible ranges are achieved by using multiple sections with a minimum 1” overlap to ensure continuous visibility. The gauge chamber is full width with a ½” vision slot, and reinforced with internal tie bars to add durability to the product. This will remove the possibility of lateral deflection, which can cause early gasket failure. All units are supplied with recessed gasket seats and forged covers which allow for easy and inexpensive maintenance.

Materials of Construction:

- | | |
|-------------|-------------------------|
| 1) Cover: | Forged Carbon Steel |
| 2) Chamber: | Carbon Steel-Full Width |
| 3) Glass: | Temp. Borosilicate |
| 4) Gaskets: | Grafito c/w SS binder |
| 5) Mica | HQ Mica |
| 6) U-Bolts: | A193-B7 |
| 7) Nuts: | A194-2H |
| 8) Washers | 17-7 PH S.S. |



Steam-Line TB1542 – 1500WSP Steam/Water Gages



Model	Visible (Inches)	Glass (mm)
Q16TB1540	9	229
Q17TB1540	10-1/8	257
Q18TB1540	11-3/4	299
Q19TB1540	12-1/2	318
Q26TB1540	17-1/8	435
Q27TB1540	19-3/8	492
Q28TB1540	22-5/8	575
Q29TB1540	24-1/8	613
Q37TB1540	28-5/8	727
Q38TB1540	33-1/2	851
Q39TB1540	35-3/4	908
Q47TB1540	37-7/8	962
Q48TB1540	44-3/8	1127
Q49TB1540	47-3/8	1203
Q58TB1540	55-1/4	1403
Q59TB1540	59	1499

Connection Type	
SB	Stuffing Box Nipple
SW	Socket Weld
FL	Flange
UN	Union
NP	NPT

Connection Location	
TBH	Top/Bottom Connected
CH	Side/Side Connected
TCH	Top Side/Bottom Connected
BCH	Bottom Side/Top Connected

GAUGE CONNECTION OPTIONS

STUFFING BOX NIPPLE	ALL SOCKETWELD	FLANGE
---------------------	----------------	--------

Connection Sizes Available: 1/2" – 1"
 3/4" – Stuffing Box

Quotation Information Required: Maximum Operating Steam Pressure
 Steam Water Connection Size & Type
 Valve Requirements