

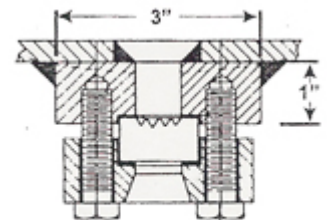
**Series QRW-20 & QTW-20  
Reflex or Transparent Weld Pad Gauges**

These gauges are designed so that they can be welded directly on to a pressure vessel. Weld pad gauges are used where regular gauge and valve construction is impractical, due to space, solid matter in the suspension and thermal stresses on the gauge glass from the associated piping. Weld Pad Gauges are available in both reflex and transparent applications. These gauges are designed to take pressure within the gauge itself. These gauges are not designed to replace the tank strength lost due to slotting the pressure vessel. It is therefore impossible give a pressure rating to the Weld Pad Gauge.



QRW-20

Glass Size	Cap Screws Per Section	Visible Glass (Inch)	Number of Sections Overall Length (Inch)			
			1	2	3	4
1	6	3 ¾	5 ¼	10 ½	15 ¾	21
2	6	4 ¾	6 ¼	12 ½	18 ¾	25
3	8	5 ¾	7 ¼	14 ½	21 ¾	29
4	10	6 ¾	8 ¼	16 ½	24 ¾	33
5	10	7 7/8	9 3/8	18 ¾	28 1/8	37 ½
6	12	9 1/8	10 5/8	21 ¼	31 7/8	42 ½
7	14	10 ¼	11 ¾	23 ½	35 ¼	47
8	16	11 7/8	13 3/8	26 ¾	40 1/8	53 ½
9	16	12 5/8	14 1/8	28 1/4	42 3/8	56 1/2



QRW-20  
Cross Section